

## 2MP 6-IN-1 EX-SDI/ HD-SDI/ HD-TVI/ AHD/ HD-CVI/ CVBS Mini Pinhole Camera

### Technical Details

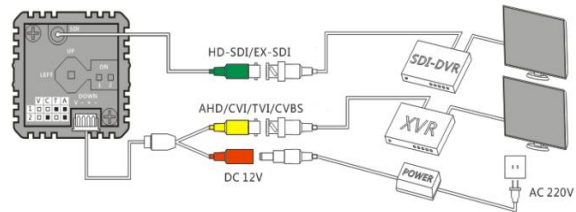
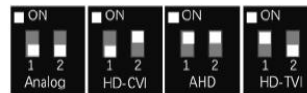
|                          |                        |
|--------------------------|------------------------|
| Item Dimensions          | 40.4*35.6*22.8mm       |
| Lens                     | 2MP 3.7mm Pinhole Lens |
| IR Distance              | No LED                 |
| Item Weight              | 50g                    |
| Shipping Weight          | 50g                    |
| Video Capture Resolution | 1080P                  |

### Product Description

#### 2MP 6-IN-1 Mini Pinhole Camera

#### Specification:

|                        |  |
|------------------------|--|
| Product Name:          | 2.0Megapixel Mini Pinhole Camera   |
| Model No:              | GW810HD  |
| Image Sensor:          | 1/3" Panasonic 34229 CMOS  |
| Resolution:            | 1928 (H)*1088(V)   |
| Lowest illumination:   | Color DSS:0.017LUX,BW DSS:0.0008LUX  |
| Electronic Shutter:    | 1/25s~1/100,000s   |
| Video System:          | NTSC   |
| Video Frame Rate:      | 25/30fps@1920×1080P  |
| Video Output:          | 2 channel, EX-SDI / HD-SDI / AHD / HD-TVI / HD-CVI / CVBS optional, with Dial Switcher |
| Compression:           | H.264 high Profile, M-JPEG   |
| Lens:                  | 3.7mm Pinhole Lens   |
| Power Supply:          | DC12V±5%   |
| Waterproof:            | IP66   |
| Color:                 | Black  |
| Operating Temperature: | -10℃ ~ +50℃ / 14~122°F   |
| Operating Humidity:    | ≤95%RH   |
| Dimension:             | 40.4*35.6*22.8mm   |
| Weight:                | 50g  |



#### Function:



|                                |                 |
|--------------------------------|-----------------|
| OSD Menu                       | Support         |
| Coaxial Cable control via      | Support         |
| True WDR                       | Support (120DB) |
| 3D DNR                         | Support         |
| Sens-UP                        | Support (×32)   |
| Day/Night Auto (ICR) / Color / | Support         |
| Defog                          | Support         |
| Motion Detection               | Support         |
| ATW                            | Support         |
| BLC                            | Support         |
| HLC                            | Support         |
| AGC                            | Support         |