

PDA Installation & Setup for Surveillance System

Use USB cable to connect between the computer and PDA. Copy videomonitor.sis file to PDA. Then do installation. After the installation, you can see DVR images.

The setting interface of each PDA may vary depending on its brand. For the actual display. Please refer to your own PDA.

Step 1

Run videomonitor.sis in PDA



A screenshot of a PDA login interface. At the top right, there is a blue square button with a white upward-pointing arrow. Below it are four input fields labeled "Server:", "Port:", "User:", and "Pwd:". All fields are currently empty. At the bottom, there is a blue horizontal bar with the word "Option" on the left and "Login" on the right.

Step 2

1. Server: Enter the IP of DVR
2. Port: Enter the port number of DVR
3. User: Enter the user name of DVR
4. Password: Enter the password of DVR

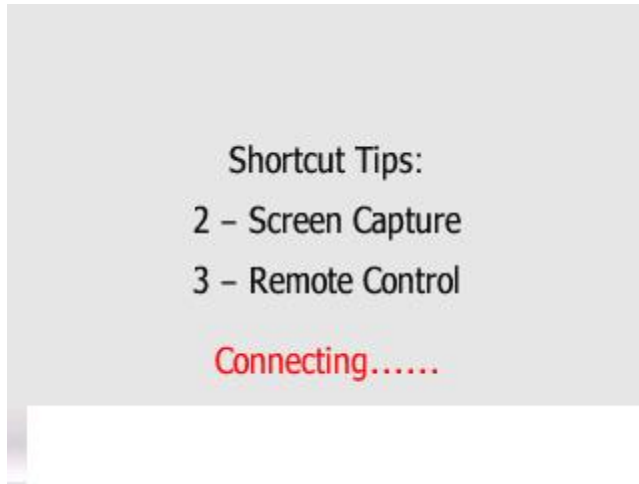
Step 3

Make sure the information you entered is correct. Then click "Login".

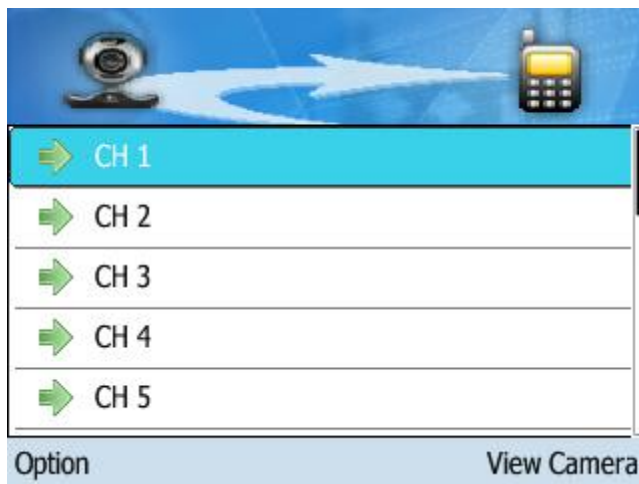


A screenshot of the same PDA login interface as in Step 1, but with the input fields filled. The "Server:" field contains "60.186.185.202", the "Port:" field contains "7777", the "User:" field contains "admin", and the "Pwd:" field contains "*****". The blue bar at the bottom still shows "Option" and "Login".

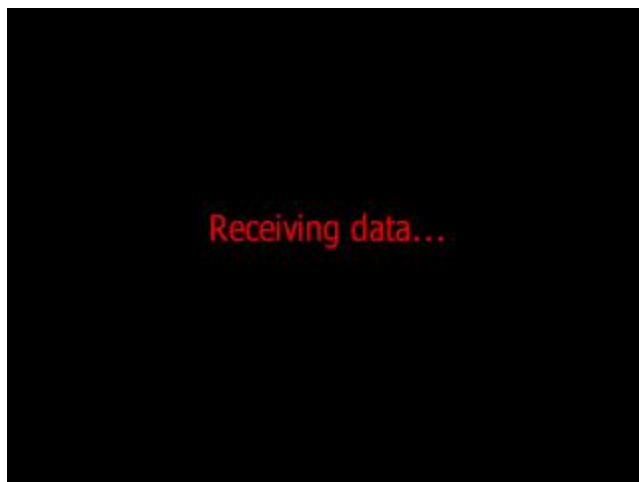
Step 4
Connecting to DVR



Step 5
Select a channel and click "View Camera"



Step 6
Receiving data. Waiting for 2 or 3 seconds.





6、 Press <OK> to show “shortcut tip”



Step 7

Press <2> to go to screen capture and press <#> to save the image.





Step 8

Press <OK> to back to monitoring screen.



Step 9

Press <OK> again to show shortcut tip screen



Step 10

Press <3> to go to Ptz Control screen



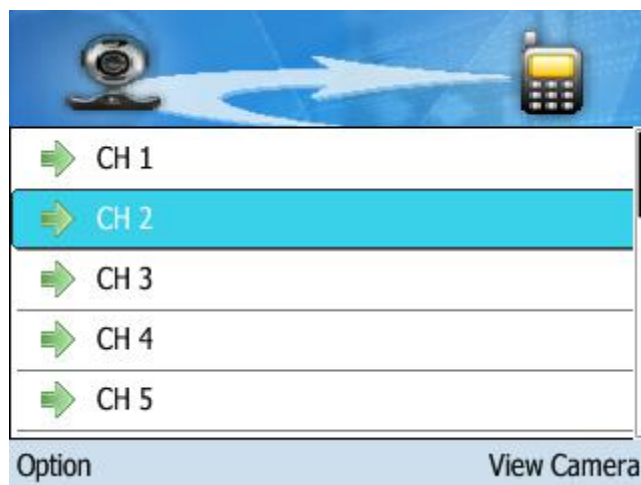
Step 11

Press <OK> to go to main screen



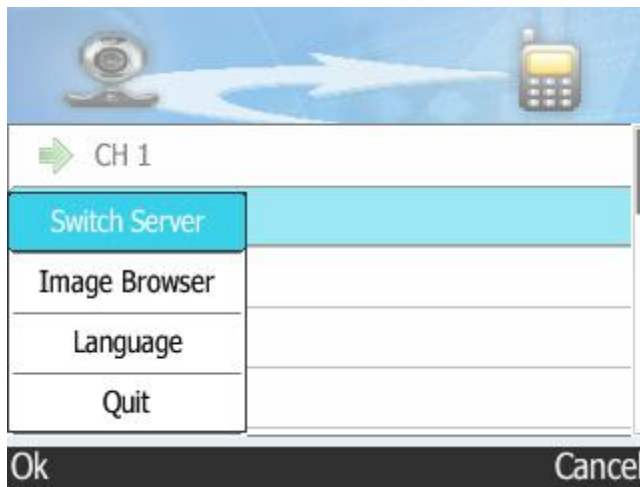
Step 12

Go to CH2



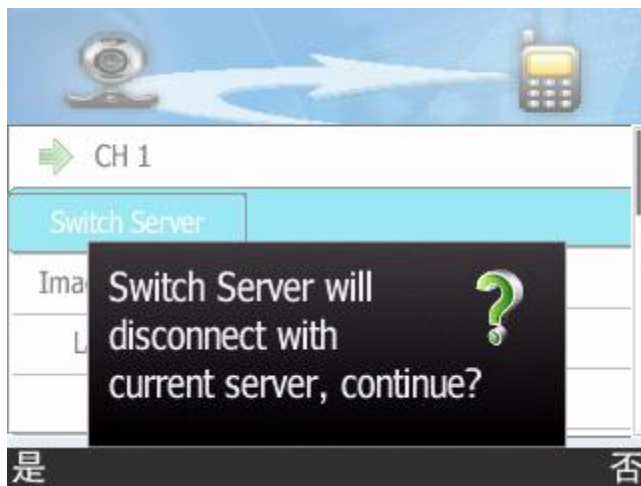
Step 13

Press <left> key to show options



Step 14

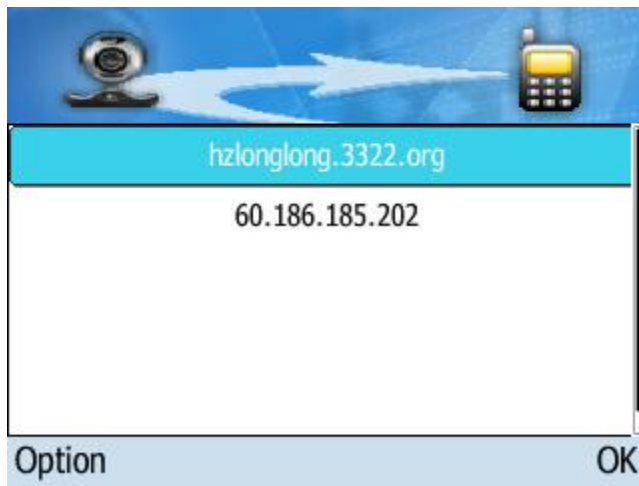
If you switch to another server, it will disconnect current server.



Step 15

Select a server.





Step 16

Select "Image Browser"



Step 17

Select "Language" option



Step 18

Quit



